

# HESED HOUSE

## HESED HOUSE SEMINAR SERIES 3

### ***Systemic and narrative therapies: Similarities and differences***

Presenter: **Dr. Paolo Bertrando M.D.**

Date: **Fri 4th February 2011**

Venue: **Hilton Hotel, Kilmainham**

*The workshop will deal with the following main topics (for each topic, a comparison will be outlined between the two approaches):*

1. General overview on systemic and narrative approaches. History and development.
  2. Indications and choice of different models in different contexts.
  3. Goals of therapy.
  4. General techniques:
    - Hypothesizing.
    - Questioning. Systemic versus narrative questioning. The questioning process.
    - Monitoring the clients' responses.
    - The therapist's position: neutrality, curiosity, irreverence.
    - Narratives: the system and the story.
    - Language and dialogue: creating a participant dialogue with clients.
    - Rhetoric: the therapist as persuading agent or companion
  5. Special techniques:
    - Circular / narrative questions
    - Final prescriptions and rituals / letters and definitional ceremonies
    - Presentification of the third party / externalisation
    - Position of the therapist/political positioning
    - Reflecting teams
  6. Specific techniques for individual therapy.
  7. Working with larger systems.
  8. Ethical issues: the personal responsibility of the therapist
- Clinical cases will be discussed in order to illustrate the model, describe intervention methods, and discuss possible difficulties of the treatment format.
- Participants will be encouraged to bring their own clinical cases for supervision, that may involve role-playing of individual systemic therapy sessions.

***This Seminar qualifies for 6 CPD points for Irish Council for Psychotherapy.***

#### **HILTON HOTEL**

Kilmainham, Dublin 8. Tel: 01-4201800.  
There is parking at €5.00 per day.  
Hilton Hotel is accessible by Bus and LUAS.

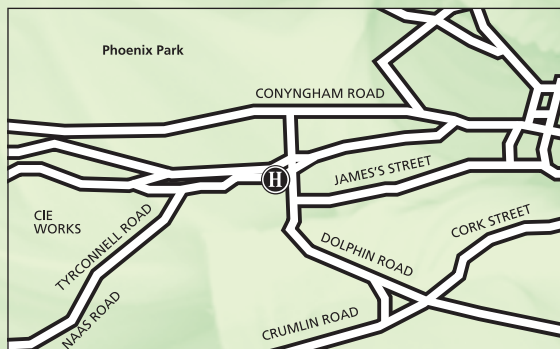
#### **SEMINAR COST**

**€90.00**

#### **SPECIAL STUDENT RATE**

**€50.00**

(Includes Lunch)

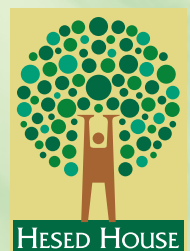


#### **Directions to Hilton Hotel**

From West - Follow the M4 and N4 towards the City Centre. When you get to the roundabout for Kilmainham take the right turn off, then take the immediate left turn and the hotel is located on your right hand side.

#### **Directions from Airport**

Follow signs to M50 and travel westbound to junction 7. Take exit 7 off the M50 and follow signs for City Centre. At Kilmainham roundabout go round almost doubling back and take left turn at junction. Hotel is on the right.



**HESED HOUSE**  
PSYCHOTHERAPY &  
CONSULTATION SERVICE

74 Tyrconnell Road  
Inchicore, Dublin 8

TELEPHONE  
01-4549474

FACSIMILE  
01-4530077

EMAIL ADDRESS  
office@hesedhouse.ie

WEB ADDRESS  
www.hesedhouse.ie

#### **APPLICATIONS**

Applications can be downloaded at [www.hesedhouse.ie](http://www.hesedhouse.ie) from our seminar series link, or you can contact us at [training@hesedhouse.ie](mailto:training@hesedhouse.ie) or at **01-4549474**.

There is a lot of interest in this series and we suggest you confirm as soon as possible.

Closing date for receipt of Applications is Friday 18th of September 2009.